

## About Us



The Deutsche Forschungsgemeinschaft (DFG, German Research Foundation) funds top-level research in all areas of science and the humanities. It supports individuals and projects that have been judged outstanding in a competitive peer-review process. We foster international scientific cooperation and are committed to promoting research careers.

The DFG is science-driven: researchers choose the topics of their research projects, and peer reviewers issue funding recommendations based on the quality of these projects. Funding decisions are made by committees made up of researchers and government representatives. Germany's federal and state governments finance the majority of the DFG's budget.

► **Researchers who have completed their doctorate and either live and work in Germany or would like to live and work here in the future can submit proposals to the DFG.**

## Contact

### Deutsche Forschungsgemeinschaft

German Research Foundation

Kennedyallee 40 · 53175 Bonn

Phone: + 49 228 885-1

Fax: + 49 228 885-27 77

info-researchcareers@dfg.de

www.dfg.de

How the DFG supports research careers:

[www.dfg.de/research\\_careers](http://www.dfg.de/research_careers)



Bluesky | @dfg.de



Mastodon | @dfg\_public



LinkedIn | Deutsche Forschungsgemeinschaft (DFG)  
– German Research Foundation



Instagram | dfg\_public



Youtube | @DFGbewegt

Design: Michaela Dreike/DFG; Photos: D. Ausserhofer/DFG, E. Lichtenscheidt/DFG, U. Grabowsky/photothek.net, Privatarchiv Prof. P. Roquette, AIP Emilio Segre Visual; November 2024



English

## Supporting Academic Careers

DFG Programmes for Postdoctoral Researchers

## Focus on Academic Careers

Creative and intelligent minds are the key to flourishing science and research. That is why the Deutsche Forschungsgemeinschaft (DFG, German Research Foundation) puts a special focus on promoting talented early-career researchers. The DFG is committed to helping talents pursue their cutting-edge ideas in top-level settings and become independent early in their careers.



Flexible funding for individuals or for projects and tailored excellence programmes give early-career researchers the opportunity to advance their academic careers.

## Starting Your Research Career

### Walter Benjamin Programme

In the early postdoctoral phase, the Walter Benjamin Programme supports you in developing your research career with your own independent research project for up to two years. Mobility is particularly important in this career phase, so as a rule you move on to another research environment. You have the freedom to select the place where you would like to work. In Germany, the DFG supports you with a position, and abroad with a fellowship. There is also the option of combining stays abroad and in Germany or to experience research in Germany after a doctorate abroad.

## Project-based Postdoctoral Qualification

### Working in a DFG-funded Project or Group

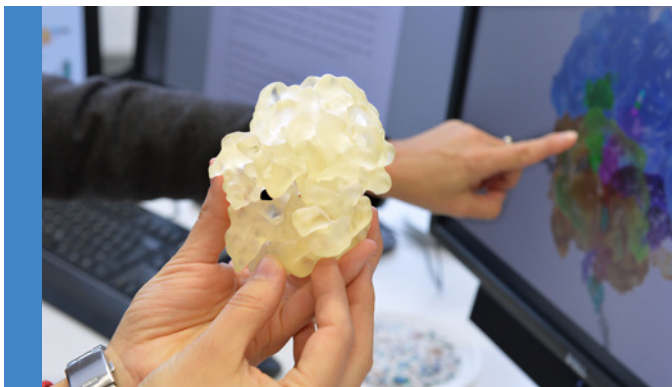
After your doctorate, you can join a project or group funded by the DFG to work on a postdoctoral position. The options include individual grant projects and large groups such as Research Units and Collaborative Research Centres.

As a postdoc in a Research Training Group, you can also contribute to the research and profit from the qualification programme while gaining some experience in supervising doctoral researchers.

You will be embedded in a quality-checked environment: all DFG-funded projects and groups have been successful in a competitive review process. Working in such a setting gives you the chance to train for your career and expand your professional network. You can find out which specific projects and groups the DFG funds in the GEPRIS database.

### Leading Your Individual Project

If you have an innovative idea for a research project with a clearly defined topic and duration, the DFG's Individual Research Grant programme gives you the opportunity to realise this project in Germany covering all necessary costs. As required, you can include a temporary position for yourself as the project's principal investigator.



## Excellence Programmes



### Emmy Noether Programme

This programme is aimed at outstanding researchers with two to four years of postdoctoral research experience (or up to six years for licensed applicants from the fields of medicine and psychology). It allows you to head your own Emmy Noether research group for six years. It offers you a fast-track opportunity to qualify for a leading position in research.

### Heisenberg Programme

If you already meet all the requirements for appointment to a professorship, the Heisenberg Programme may be an option for you. As you prepare for a leading academic position, the DFG provides you with funding for up to five years to work on an advanced research topic. The programme offers four different types of funding you can choose once you are accepted: a fellowship, a position, a rotation position or a professorship.