



WHO IS ALREADY CONDUCTING RESEARCH IN MY FIELD?

German Project Information System (GEPRIS)

Which existing projects touch upon the subject on which I would like to write my PhD thesis? What is the state of research? Where are possible points of contact? Answers to these questions are provided by the "German Project Information System" (GEPRIS) database, which is run by the DFG. It contains descriptions of all projects that the DFG has funded since the beginning of the 2000s. Users will find a short summary of results and project contact details.

gepris.dfg.de

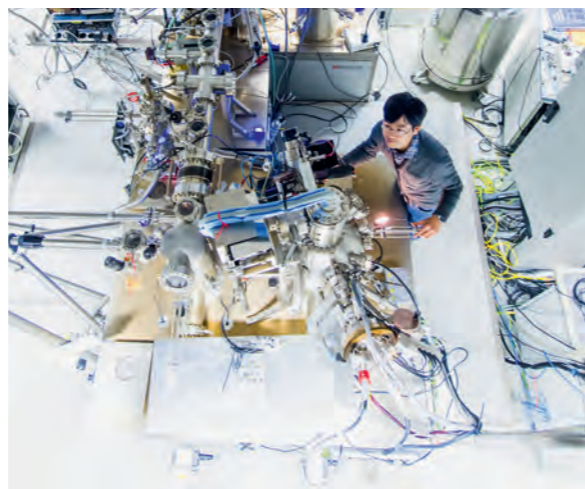


WHAT KINDS OF FUNDING OPPORTUNITIES EXIST?

Database: DAAD Funding Guide

Many organisations and institutions in Germany support young researchers on their path towards a PhD. The DAAD has assembled a selection of over 100 scholarships and other programmes, which are offered not only by the DAAD, but also by numerous other organisations. The "DAAD Funding Guide" database helps future PhD students find the appropriate contact for a scholarship.

www.funding-guide.de



CONTACT

DFG

German Research Foundation (DFG)

Kennedyallee 40
53175 Bonn, Germany
Postal address: 53170 Bonn
Phone: +49 228 885-1
Fax: +49 228 885-2777
www.dfg.de

Questions about funding opportunities:
info-nachwuchs@dfg.de

Questions about DFG information systems:
informationsmanagement@dfg.de

DAAD

German Academic Exchange Service (DAAD)

Section 523 – Research Marketing
Kennedyallee 50
53175 Bonn, Germany
Phone: +49 228 882-0
Fax: +49 228 882-117
research-in-germany@daad.de
www.daad.de

FUNDED BY



Federal Ministry
of Education
and Research

ONLINE GUIDE TO A PHD IN GERMANY

DAAD

DFG

WHERE CAN I GET AN OVERVIEW?

Website: [Research in Germany](https://www.research-in-germany.de)

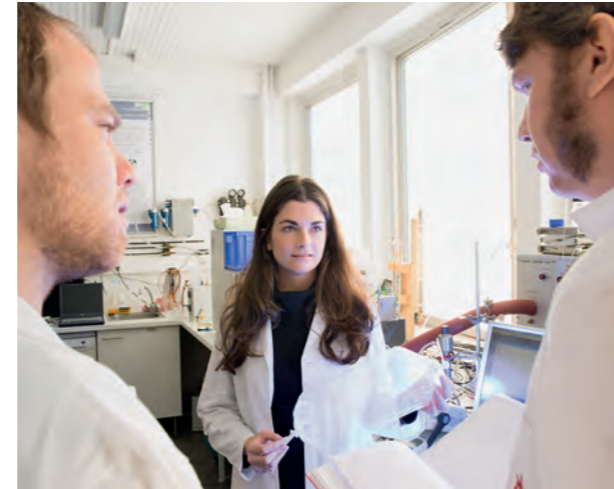
Are you planning to obtain a PhD in Germany? The “Research in Germany” website offers a good introduction. The Internet portal provides an overview of the German research landscape and possible career paths. Detailed information for PhD students has been put together in a separate section. The website is published by the Federal Ministry of Education and Research (BMBF); its content is maintained by the DAAD.



www.research-in-germany.de

www.facebook.com/Research.in.Germany

www.twitter.com/ResearchGermany



HOW CAN I FIND A PHD POSITION?

Database: [PhDGermany](https://www.phdgermany.de)

The “PhDGermany” database helps people looking for a suitable PhD research post. It allows users to search on the basis of criteria such as subject area, desired location and preferred language in order to find appropriate job offers from the wide selection available. The database is run by the DAAD.



www.phdgermany.de

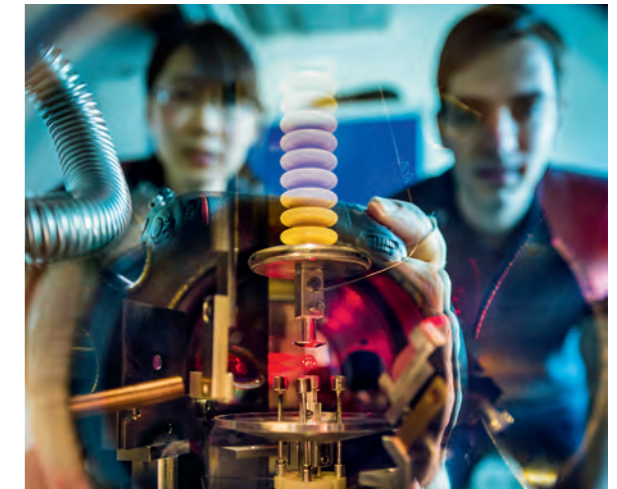
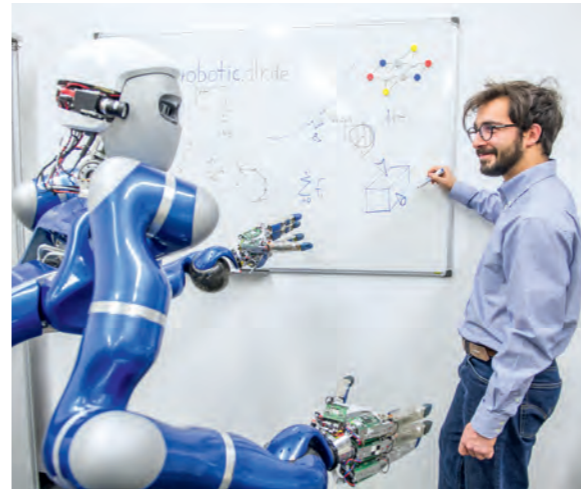
WHICH PHD PROGRAMMES ARE INTERNATIONALLY ORIENTED?

Database: [International Programmes](https://www.daad.de/international-programmes)

Successful research involves exchange. Whether it is biomedicine in Dresden or simulation technology in Stuttgart, Germany offers a large number of internationally oriented PhD programmes. The DAAD database “International Programmes in Germany” helps interested scholars find programmes that match their personal profiles. In general, the language of instruction is English and the PhD thesis can usually also be written in English.



www.daad.de/international-programmes



WHICH INSTITUTE IS THE RIGHT ONE FOR ME?

Search engines: [Research Explorer](https://www.research-explorer.de) and [Higher Education Compass](https://www.hochschulkompass.de)

Germany has a large network of universities and research institutions. If you want to find out which institutions are working in your field, the DFG’s “Research Explorer” offers an orientation guide. This practical search engine produces a list of locations. Further links to the “Higher Education Compass” website of the German Rectors’ Conference enable users to find out about the conditions under which a PhD is possible at each location.

www.research-explorer.de

www.hochschulkompass.de

